



Ultra Low Cost 3-Pin Microprocessor Reset

Description

The V6340 monitors the supply voltage of any electronic system, and generates the appropriate Reset signal. The threshold must be chosen to the minimum allowed voltage which guarantees the good functionality of the system. As long as V_{DD} stays upside this voltage level, the output stays inactive. If V_{DD} drops below V_{TH} , the output gets active. The threshold voltage may be obtained in different versions: 2.6V, 3.0V, 3.7V and 4.4V.

Applications

- Applications needing a voltage detection:
- Computer electronics
 - White / Brown goods
 - Industrial electronics
 - Telecom systems
 - Hand-held systems

Features

- SOT-23 package
- Reset output state guaranteed down to $V_{DD} = 1V @ 25^{\circ}C$
- Low supply current: stays stable during switching
 - versions B, H, N: typ. $19\mu A$ at $V_{DD} = 5V$
 - other versions: typ. $38\mu A$ at $V_{DD} = 5V$
- $\pm 2.5\%$ voltage threshold accuracy
- High noise immunity
- No external components required
- Push-pull or Open drain output
- Pin compatible with MAX 809 in SOT-23, by appropriate layout on PCB
- TTL output compatibility

Typical Operating Configuration

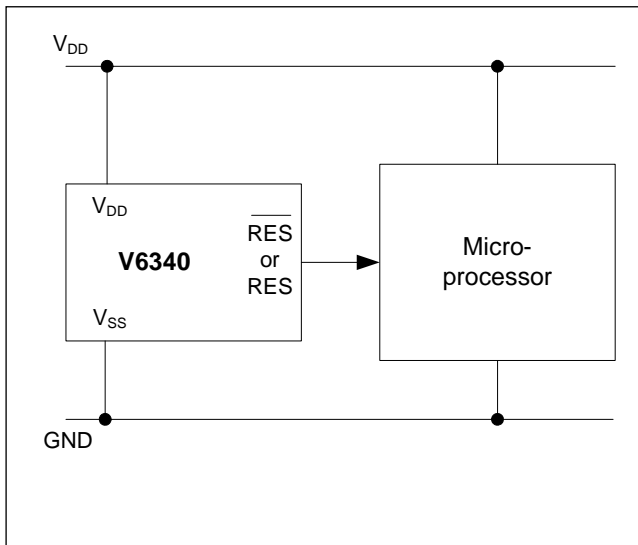


Fig. 1

Pin Assignment

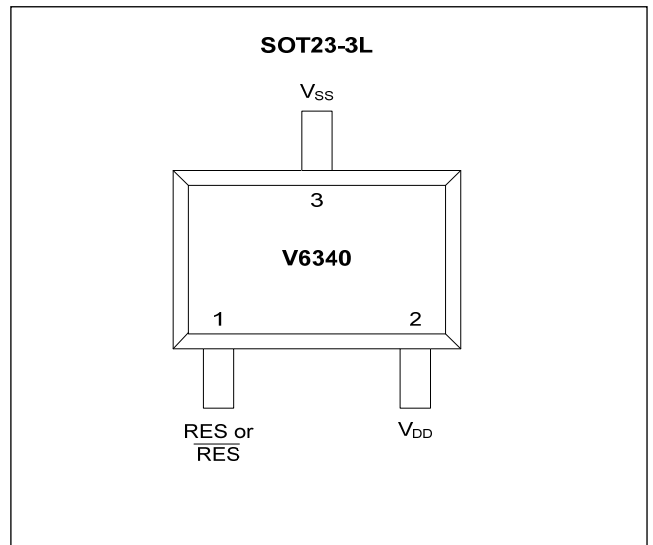


Fig. 2

Absolute Maximum Ratings

Parameter	Symbol	Conditions
Voltage at V_{DD} to V_{SS}	V_{DD}	-0.3V to +8V
Minimum voltage at RES or \overline{RES}	V_{min}	$V_{SS} - 0.3V$
Maximum voltage at RES or \overline{RES}	V_{max}	$V_{DD} + 0.3V$
Storage Temperature Range	T_{STO}	-65°C to +150°C

Table 1

Stresses above these listed maximum ratings may cause permanent damages to the device. Exposure beyond specified operating conditions may affect device reliability or cause malfunction.

Handling Procedures

This device has built-in protection against high static voltages or electric fields; however, it is advised that normal precautions be taken as for any other CMOS component. Unless otherwise specified, proper operation can only occur when all terminal voltages are kept within the voltage range.

Operating Conditions

Parameter	Symbol	Min	Max	Unit
Operating Temperature ¹⁾	T_A	-40	+125	°C
Positive Supply Voltage ²⁾	V_{DD}	1	5.5	V

Table 2

¹⁾The maximum operating temperature is confirmed by sampling at initial device qualification. In production, all devices are tested at +25°C

²⁾ $V_{DD} = 1V$ guaranteed at +25°C (see Fig. 14 for more information)

Electrical Characteristics

$T_A = +25^\circ\text{C}$, unless otherwise specified

Parameter	Symbol	Test Conditions	Min.	Typ.	Max.	Unit
Supply current	I_{DD}	$V_{DD} = 5V$, output open		38	50	μA
Threshold voltage	V_{TH}	C, I, O	2.94	3.02	3.10	V
	V_{TH}	D, J, P	3.62	3.72	3.82	V
	V_{TH}	F, L, R	4.27	4.39	4.51	V
Threshold hysteresis	V_{HYS}			5		mV
RES Output Low Level	V_{OL}	$V_{DD} = 1.6V, I_{OL} = 1mA$		200	270	mV
	V_{OL}	$V_{DD} = 2.5V, I_{OL} = 2mA$		195	250	mV
	V_{OL}	$V_{DD} = 3.5V, I_{OL} = 3mA$		198	250	mV
	V_{OL}	$V_{DD} = 5V, I_{OL} = 4mA$		185	250	mV
RES Output High Level	V_{OH}	$V_{DD} = 1.6V, I_{OH} = -1mA$	1.25	1.36		V
	V_{OH}	$V_{DD} = 2.5V, I_{OH} = -1.5mA$	2.2	2.3		V
	V_{OH}	$V_{DD} = 3.5V, I_{OH} = -2.5mA$	3.15	3.27		V
	V_{OH}	$V_{DD} = 5V, I_{OH} = -3.5mA$	4.65	4.76		V
Output leakage current ¹⁾	I_{LEAK}	$V_{DD} = 5V$		0.005	1	μA

Only for version B, H and N

Parameter	Symbol	Test Conditions	Min.	Typ.	Max.	Unit
Supply current	I_{DD}	$V_{DD} = 5V$, output open		19	31	μA
Threshold voltage	V_{TH}	B, H, N	2.56	2.65	2.74	V
Threshold hysteresis	V_{HYS}			32		mV

Table 3

¹⁾ Only for Open drain versions

Timing Waveform

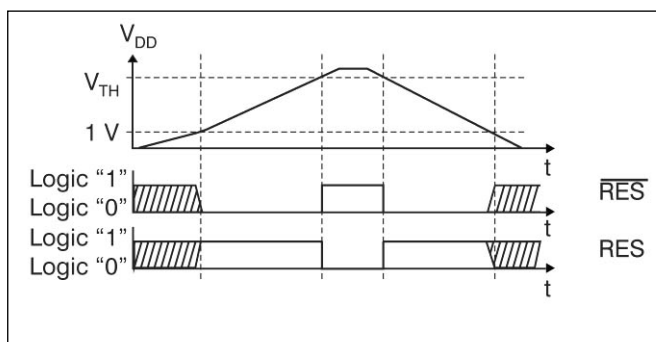


Fig.3

Block Diagram

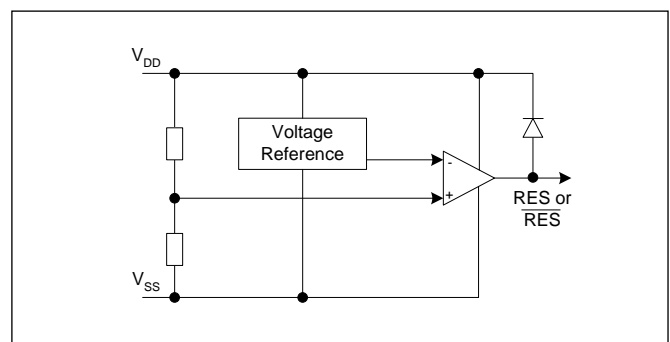


Fig.4

Typical Characteristics

Normalized V_{OL} vs. Temperature

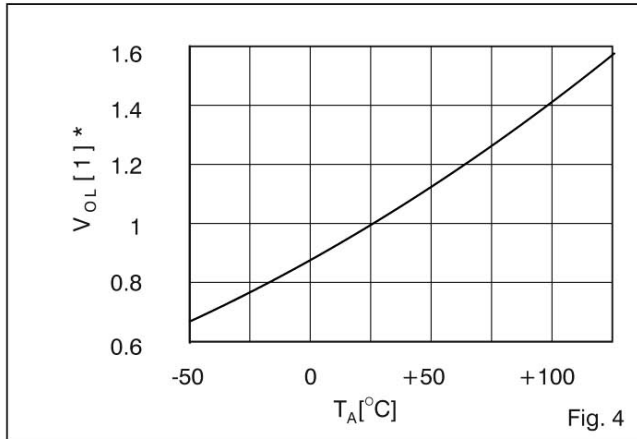


Fig. 4

Normalized V_{OH} vs. Temperature

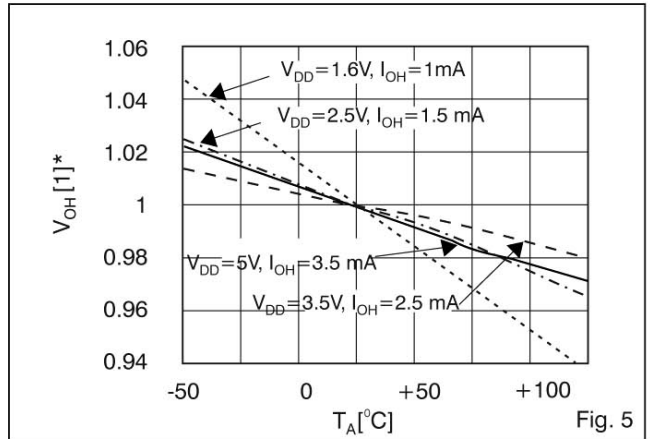


Fig. 5

V_{OL} vs. Output Current

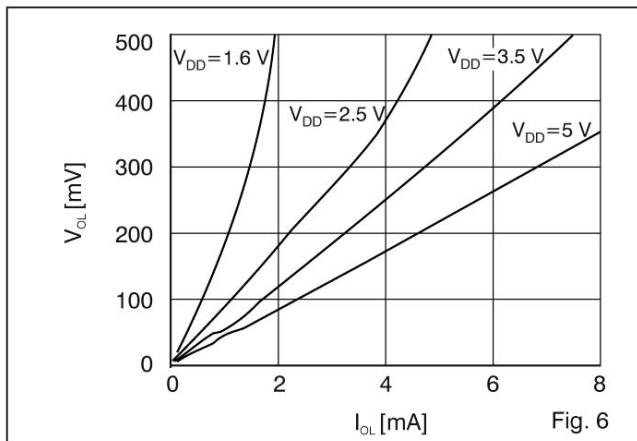


Fig. 6

$V_{DD} - V_{OH}$ vs. Output Current

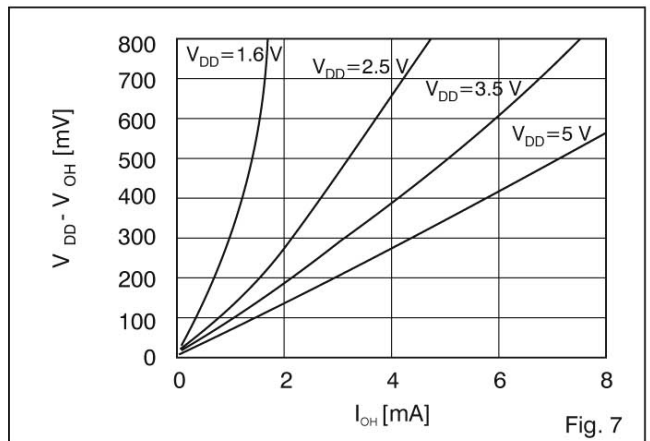


Fig. 7

V_{OL} vs. Supply Voltage

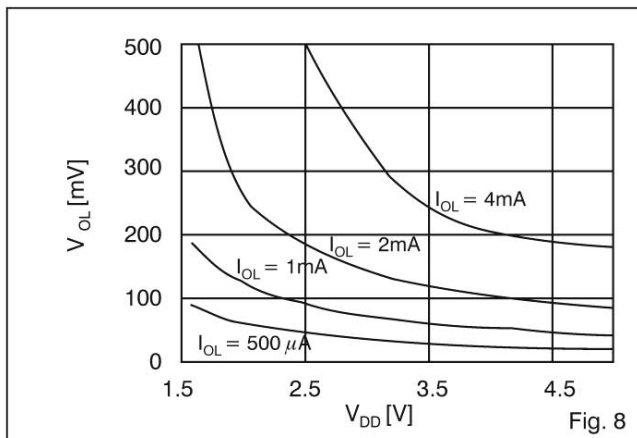


Fig. 8

$V_{DD} - V_{OH}$ vs. Supply Voltage

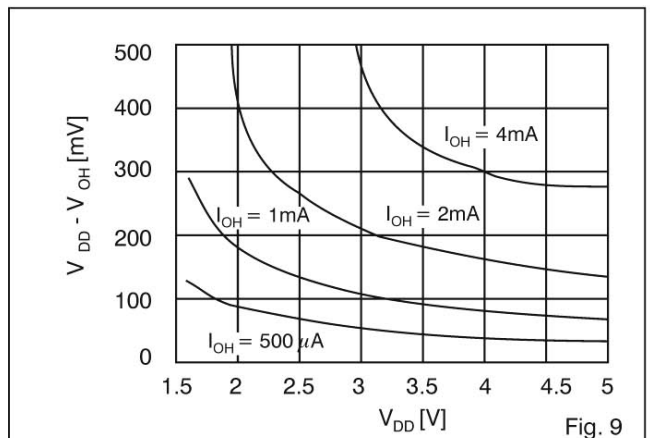
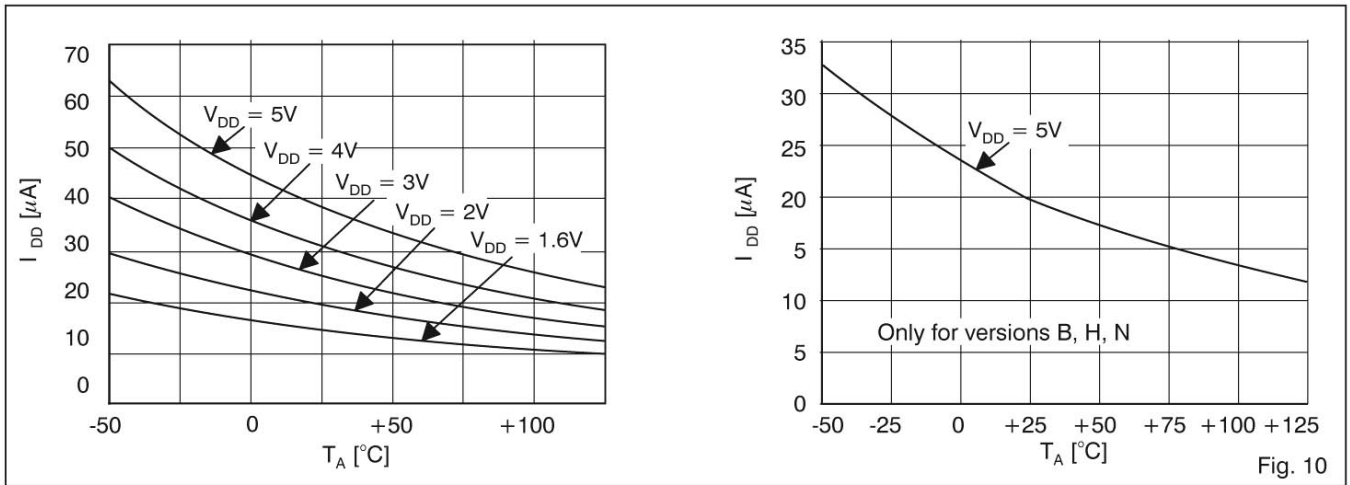


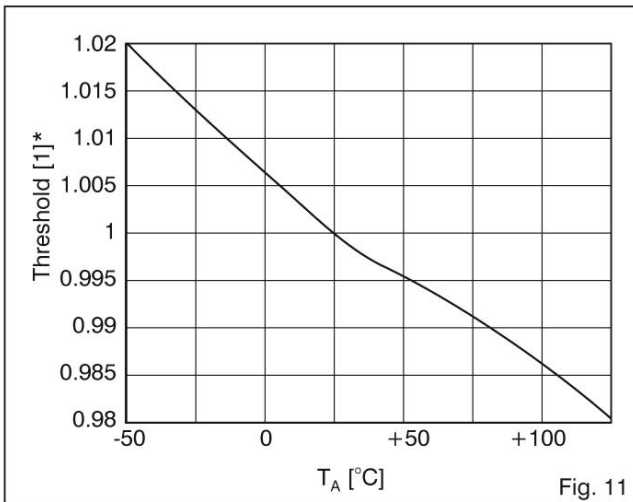
Fig. 9

[1]* Multiply value at +25°C by this factor to determine the value at temperature

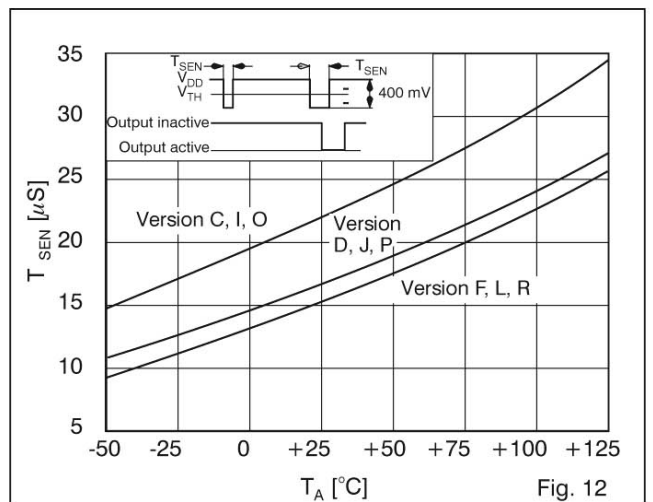
Supply Current vs. Temperature



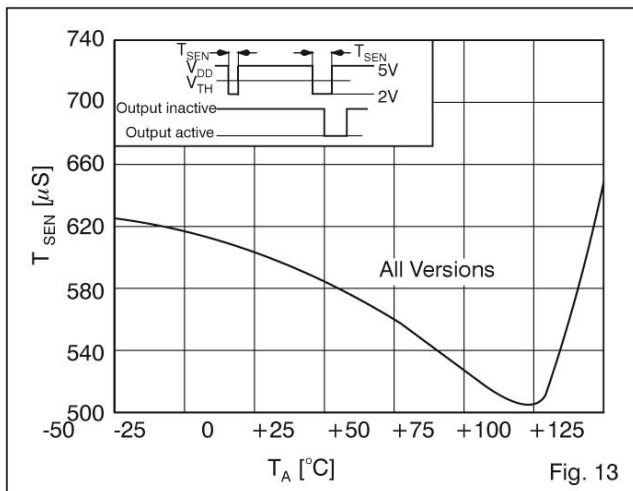
Normalized Threshold vs. Temperature



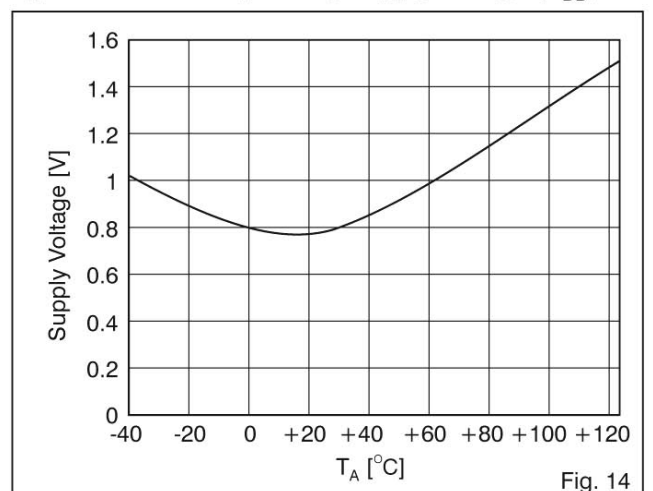
Typical Sensivity vs. Temperature



Typical Sensivity vs. Temperature



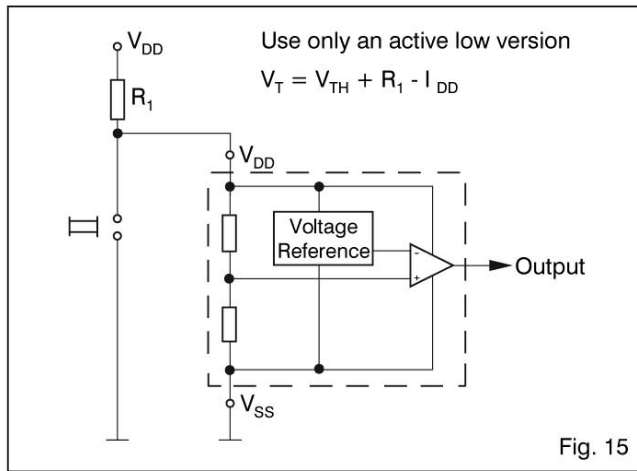
Typical Minimum Operating Supply Voltage (V_{DD})



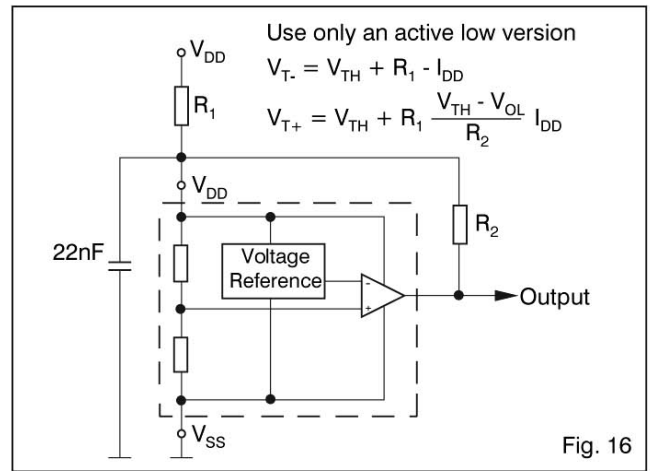
[1]* Multiply value at +25°C by this factor to determine the value at temperature

Typical Applications

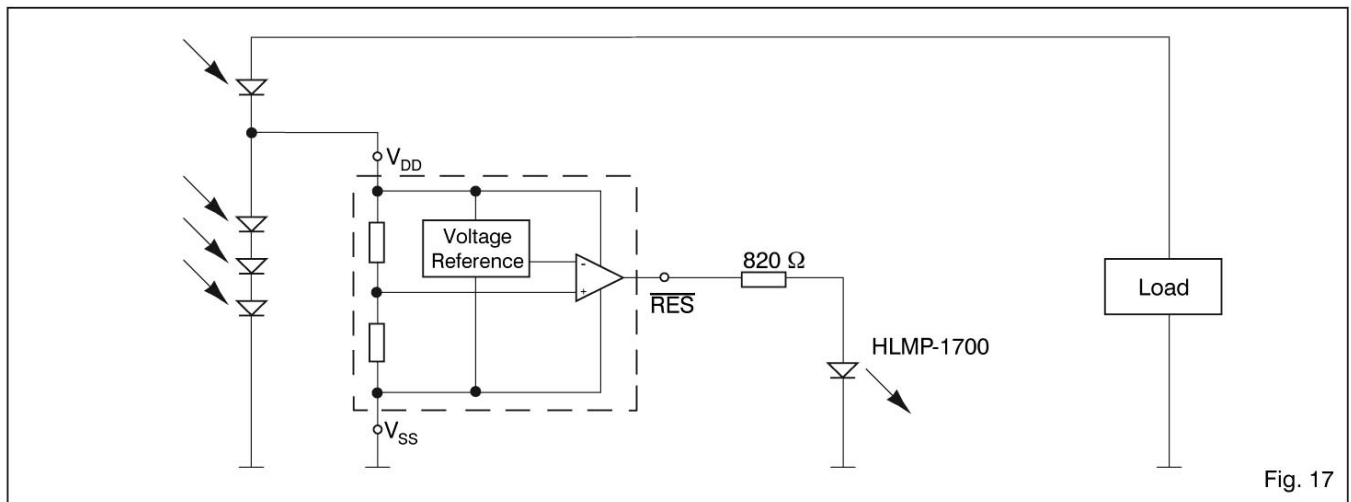
Voltage Monitor with Manual Reset



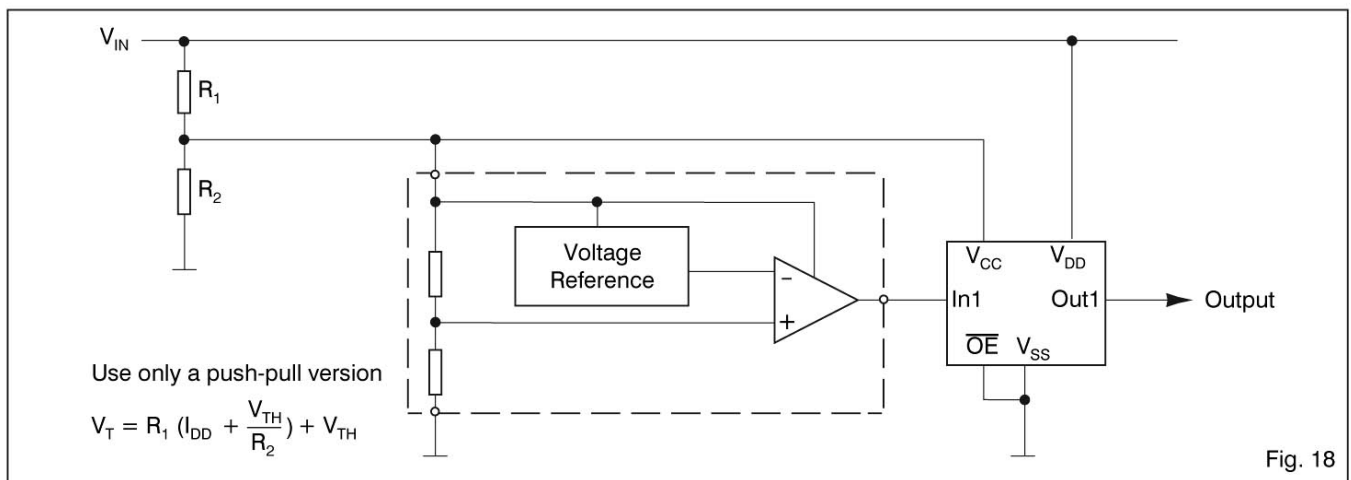
Reset Circuit with Hysteresis



Solar Cell Power O.K. Indicator



Accurate High Voltage Monitoring



Pin Description

SOT23-3L

Pin	Name	Function
1	RES or $\overline{\text{RES}}$	Reset output
2	V_{DD}	Positive supply
3	V_{SS}	Supply ground

Table 4

Packaging and Ordering Information

Dimensions of SOT23-3L Package

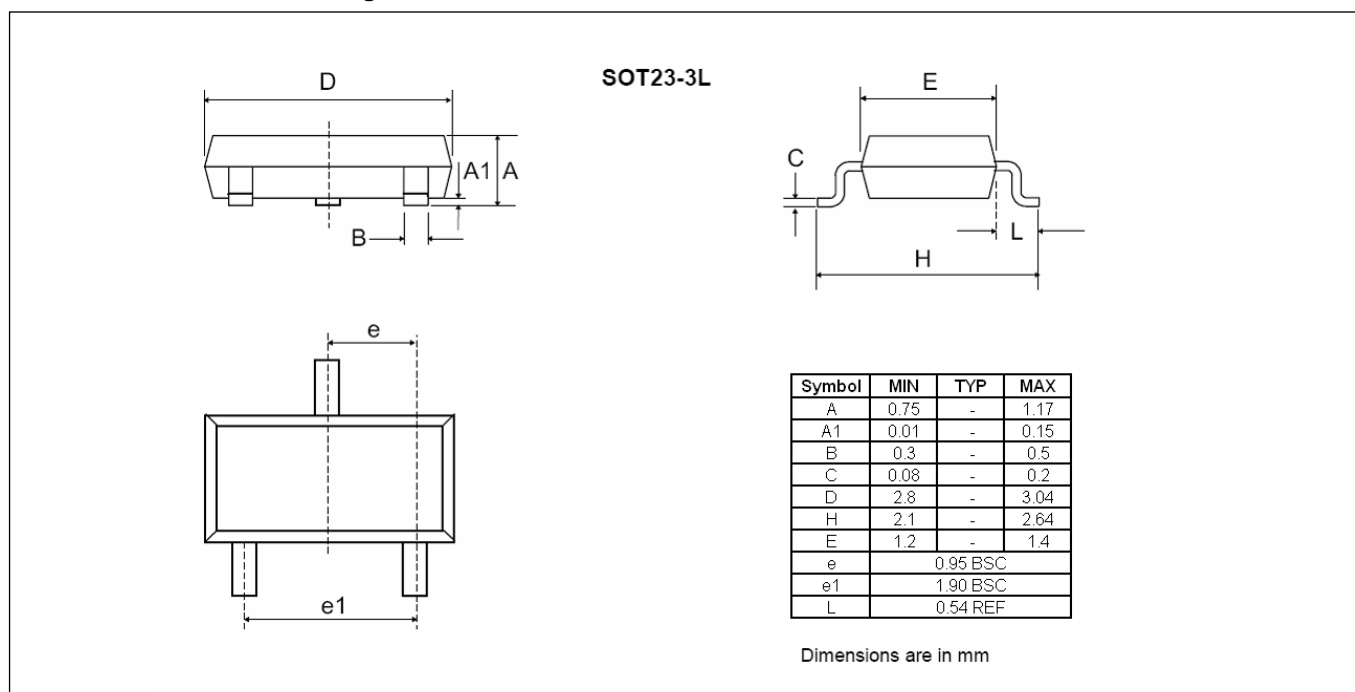


Fig. 5



Ordering Information

Part Number: V6340 R SP3B +

Threshold Voltage and Output Type

	2.6V	3.0V	3.7V	4.4V
Push-pull, Reset active low	B	C	D	F
Push-pull, Reset active high	H	I	J	L
Open drain, Reset active low	N	O	P	R

Table 5

RoHS

+ = lead-free & green mold

Package and Delivery Form

SP3B = SOT23-3, Tape & Reel

Note: Subject to availability (see standard versions list below). When ordering, please give complete Part Number without space between letters: eg. V6340RSP3B, etc.

Standard Versions (Top Marking)

Marking for SOT23-3 package

Part Number	Threshold Voltage	Output type	Package and Delivery Form	Top Marking ¹⁾
V6340BSP3B+	2.6V	Active low push-pull	SOT23-3L, Tape & Reel 3000 pcs	E1##
V6340CSP3B+	3.0V			EC##
V6340DSP3B+	3.7V			BU##
V6340FSP3B+	4.4V			EA##
V6340LSP3B+	4.4V	Active high push-pull		E8##
V6340OSP3B+	3.0V	Active low open-drain		EB##
V6340PSP3B+	3.7V			ED##
V6340RSP3B+	4.4V			E3##

¹⁾ Top marking is standard from 2006. No bottom marking exists. Where ## refers to the lot number (EM internal reference only)

Traceability for small packages

Due to the limited space on the package surface, the bottom marking contains a limited number of characters that provide only partial information for lot traceability. Full information for complete traceability is however provided on the packing labels of the product at delivery from EM: It is highly recommended that the customer insures full lot traceability of EM product in his final product.

Standards Version (Samples)

Part Number
V6340BSP3B+
V6340CSP3B+
V6340DSP3B+
V6340FSP3B+

Part Number
V6340LSP3B+
V6340OSP3B+
V6340PSP3B+
V6340RSP3B+

Sample stock is generally held on **standard versions** only. Please contact factory for other versions not shown here and for availability of non standard versions.

EM Microelectronic-Marín SA (EM) makes no warranty for the use of its products, other than those expressly contained in the Company's standard warranty which is detailed in EM's General Terms of Sale located on the Company's web site. EM assumes no responsibility for any errors which may appear in this document, reserves the right to change devices or specifications detailed herein at any time without notice, and does not make any commitment to update the information contained herein. No licenses to patents or other intellectual property of EM are granted in connection with the sale of EM products, expressly or by implications. EM's products are not authorized for use as components in life support devices or systems.