

DESCRIPTION

Solenoid valve 2 way normally closed
direct acting poppet type

CONSTRUCTION

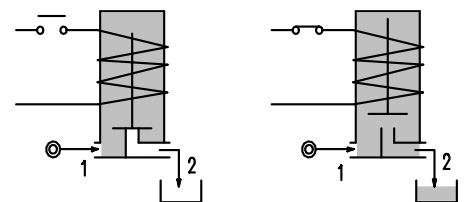
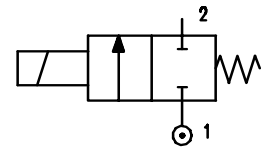
| | |
|------------------|-----------------|
| Body | Brass |
| Armature tube | Brass |
| Plunger and core | Stainless steel |
| Springs | Stainless steel |
| Seal material | NBR |
| | FPM |
| | EPDM |



2

FEATURES

Maximum allowable pressure 50 bar *
Maximum fluid viscosity 25cSt (mm²/s)
Ambient temperature : with class F coil -10°C +55°C
with class H coil -10°C +80°C
Universal mounting position



OPTIONS : Armature tube in stainless steel
Electroless nickel plating
Explosion proof coil according to ATEX - EExmII Series7
Manual override
Version for use with oxygen

| CODE ① ② | Connection G ISO 228 | Orifice mm | KV m ³ /h | Differential pressure bar | | | Nominal power | | | Coil | | Seal ① | Temp. range °C |
|----------------------|----------------------------|---------------|-------------------------|------------------------------|-----|-----|---------------|---------------|------------|--------|-------|-----------|----------------------|
| | | | | Min | Max | | AC Inrush | VA Holding | DC Watt | Series | Width | | |
| | | | | | AC | DC | | | | | | | |
| E105A.....12///..... | 1/8" | 1.2 | 0.04 | 0 | 25 | 25 | 12 | 8 | 6.5 | 3 | 22 | NBR=B | -10 +90 |
| E105A.....15///..... | 1/8" | 1.5 | 0.06 | 0 | 16 | 16 | 12 | 8 | 6.5 | 3 | 22 | | |
| E105A.....20///..... | 1/8" | 2 | 0.09 | 0 | 12 | 10 | 12 | 8 | 6.5 | 3 | 22 | | |
| E105A.....25///..... | 1/8" | 2.5 | 0.14 | 0 | 8 | 5.5 | 12 | 8 | 6.5 | 3 | 22 | EPDM=E | <+140 |
| E105A.....31///..... | 1/8" | 3.1 | 0.19 | 0 | 5 | 2 | 12 | 8 | 6.5 | 3 | 22 | | |
| E105A.....40///..... | 1/8" | 4 | 0.35 | 0 | 4 | 1.5 | 12 | 8 | 6.5 | 3 | 22 | | |
| E105A.....20///..... | 1/8" | 2 | 0.09 | 0 | 25 | 15 | 15 | 11 | 5 | 4 | 30 | FPM=V | -10 +130 |
| E105A.....25///..... | 1/8" | 2.5 | 0.14 | 0 | 16 | 8 | 15 | 11 | 5 | 4 | 30 | | |
| E105A.....31///..... | 1/8" | 3.1 | 0.19 | 0 | 8 | 4 | 15 | 11 | 5 | 4 | 30 | | |
| E105A.....40///..... | 1/8" | 4 | 0.35 | 0 | 5 | 2.5 | 15 | 11 | 5 | 4 | 30 | | |

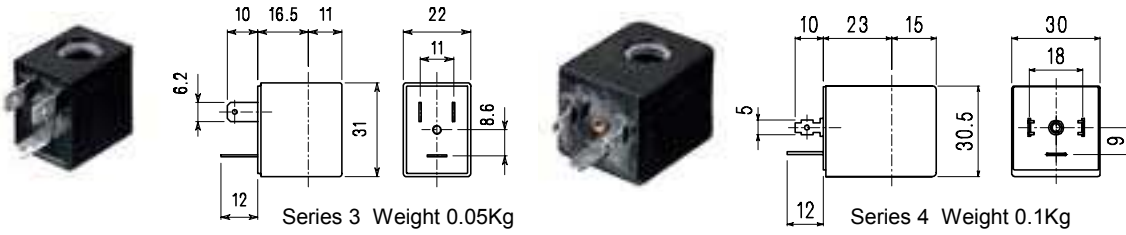
① Seal Example: E105AB20///30B NBR seal
② Coil Coil 24V 50/60Hz

* REMARK: The maximum allowable pressure PS for steam is 2,5bar (gauge pressure)

| COILS | Alternating Current ~50/60Hz Volt | | | | | | | Direct Current Volt | | | Electrical connection | Connectors |
|--------------------------------|--------------------------------------|-----|-----|-----|------------|-----|-----|------------------------|-----|-----|--------------------------|-------------------------|
| | 12 | 24 | 48 | 110 | 220 230 | 240 | 380 | 12 | 24 | 48 | | |
| Series 3 Width 22 Code ② | 30A | 30B | 30C | 30D | 30E | 30F | 30G | 300 | 301 | 302 | DIN 46244 | PG9 code 10348000 |
| Series 4 Width 30 Code ② | 40A | 40B | 40C | 40D | 40E | 40F | 40G | 400 | 401 | 402 | DIN 43650A | PG9 code 10349000 |

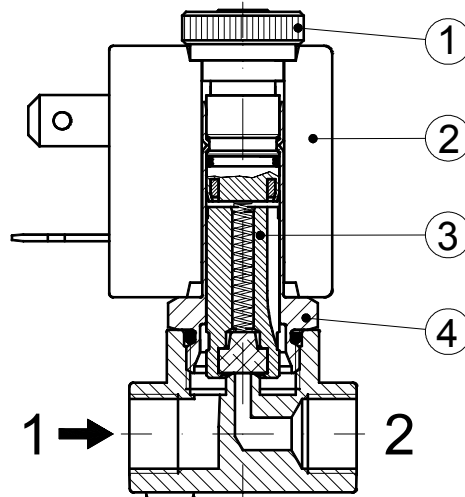
DESCRIPTION
 Class F insulation
 Voltage tolerance
 AC +15% -10%
 DC ± 10%
 Protection class
 IP65 with connector fitted
 IP00 without connector
 Continuous service ED100%

OPTIONS
 Class H insulation
 Cable attached
 Special coil voltage
 Special coil powers

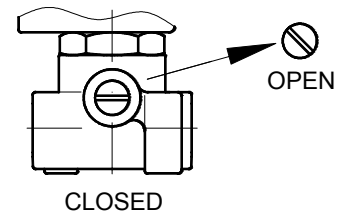


SPARE PARTS LIST

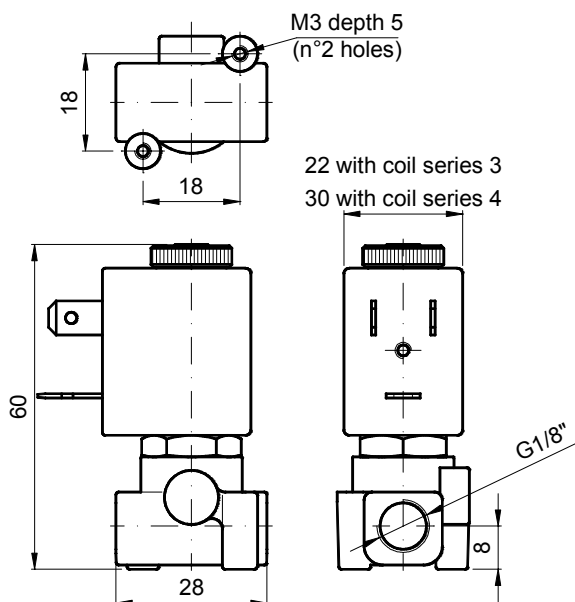
1. Coil fixing nut
2. Coil
3. Plunger
4. Armature tube with core



MANUAL OVERRIDE



OVERALL DIMENSION



Weight with coil series 3 = 0.13 Kg
 Weight with coil series 4 = 0.18 Kg